

PRODUCT TEST

with Roger Bisby



Roger Bisby
gets dosed up
on inhibitor.

PRODUCT
TEST HEATING & PLUMBING
INSTALLER

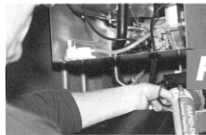
RAPID RESPONSE

Adding water treatment such as cleanser and inhibitor to a central heating system used to be an easy job. Mind you, there are still plenty of plumbers out there who make it easier than it ought to be. I am referring to those who just pour a gallon straight into the F&E tank without bothering to drain any out of the system. The result, in time, is a thick gel floating on the top that does nothing to help prevent corrosion. Rapid Dose from Aqueous Logic is the dream product for such people because they won't have to get up in the loft or even drain anything down. Using the special brass adaptors made by Monument Tools you can simply charge up the system with the power of the aerosol. It will work on sealed systems up to 2.5 bar. If it is above that you ought to be thinking about letting a bit out anyway. You don't even have to wait for the system to cool down.

Adaptability

There are all manner of adaptors available for this system. You can take out a 1/8" radiator blank and put in an adaptor so that the can screws straight in to the end. I tried the product on a heating system dosing via the filling loop - which seems to be the easiest option. You have to screw the loop end in first and then screw the little hose onto the can. Once it pushes in the plunger, the whole can discharges and you get a reassuring clunk in the can as the last bit of inhibitor is delivered. There is enough in one can for a five rad system. This is a clever trick because the average house will therefore need two cans, and there are two cans in the box.

The inhibitor is suitable for all systems and is said to be 'advanced' - which means it is suitable for aluminium and steel or any other exotic metal. I can't vouch for the effectiveness of the chemical, I will have to let you know in a few years, but it certainly has that smell that says 'inhibitor' to every plumber. This is a good thing because I am looking for a pressure drop on one system at the moment and sniffing it out seems to be the only way.



Use the
FREE
Reader Enquiry card
to find out more!

One last thing...

■ It may be my imagination but immediately after circulating the inhibitor, the system seemed quieter. It was. I had forgotten to turn the boiler back on!

